



ELSLEY PRIMARY SCHOOL

learning, sharing, achieving and respecting

January 2024

NEWSLETTER



Follow us @ElsleyPrimary

It is hard to believe that January has been and gone! Already this year in 2024 we have seen exciting initiatives including the Reception children staying for their extended day with a 'Bedtime' story. Almost 100% of children stayed for this event which forms part of our overall school approach of extended days building up to overnight experiences and residential trips. These are incredible opportunities for our children and help them to develop in so many ways. It was a pleasure to join our Year 6 children on an evening trip to the theatre and this has given them a taste of what their own end-of-year performance might look like before the summer holidays.

Measles cases are rising. I urge you to check your child's measles vaccination and read pages 5-6 of this newsletter. Wishing you all a very good half term break.

Raphael Moss, Headteacher



NURSERY 2024 APPLICATIONS

We are still accepting applications for part-time

Nursery places (15 hours per week, Monday – Friday).

If your child was born between 01/09/2020 – 31/08/2021 you are eligible to apply. Please collect an application form from the School Office.



MEDICAL APPOINTMENTS

Where possible, please try to arrange medical appointments for your child outside of school hours but if your child does need to go for an appointment, please provide the school with an appointment card or letter, screenshot of appointment from your mobile phone or copy of a named prescription. If you do not provide any of these the absence may not be authorised by school. Thank you.

REMINDERS FROM THE OFFICE

We are here to help you with all your enquiries.

School Office – Opening Hours

The School Office opens to parents for general enquiries between **8.30am and 9.30am** on all days (9am– 9:30am on Wednesdays).

The office closes **4.15pm Monday to Thursday** and **3.45pm on Fridays**.

For help with School Money please come on **FRIDAYS** between **8.45am - 9.30AM** or **2.30pm - 3.30pm**.

Attendance Email **by 9am** if your child is going to be absent for any reason. Please **EMAIL: absence@elsley.brent.sch.uk** stating your child's name, class and reason for absence, OR complete the absence form on the website OR call **0208 902 8003** choosing option 1.

School Lunches

Thanks to the Mayor of London, **ALL children** are entitled to a **Free School Meal**. Please complete the attached google form updating your child's lunch arrangements as this helps to ensure the Catering team has sufficient food available daily for pupils.

<https://forms.gle/tELDM8fh6RyTVBJJ6>

We still encourage parents to apply for means-tested Free School Meals, because the school may receive additional funds to support children (Pupil Premium). If you wish to apply for **Free School Meals** please do online at <https://pps.lgfl.org.uk/>

Thank you for treating our staff with respect and courtesy.



North West London

MMR Vaccinations (Measles, Mumps and Rubella)

Every Tuesday 9am – 4:45pm
Brent Civic Centre

Engineers Way
Wembley Park
Wembley
HA9 0FJ

Visit us and have a friendly conversation with our nursing team.



Scan the QR code to book your appointment.

- Vaccinations available to one-year-old and over
- First and second doses available
- Discuss eligibility with our nurses
- Please bring your child's Red Book

See pages 5 - 6 for more information. There are also some useful videos you can watch.

Please copy the links below into your browser.

English:

<https://www.youtube.com/watch?v=oCsW-VyPos0>

Romanian:

<https://youtu.be/76QpiEK3D9Q?si=-cDnJHGEEMnyxMTM>

Somali:

<https://youtu.be/The2hKlV18?si=kYDjk7iHehwDafhT>

February

Dates for your Diary

Mon 5th - 11th

Children's Mental Health Week

Tuesday 6th

Safer Internet Day

Mon 12th - Fri 16th

Half Term

Thursday 7th March

Parent/ Carer Teacher Consultations

HAVE EWE MET OUR NEW FARM RESIDENTS?



To set the spring scene ahead of lambing season, this half term we have welcomed 6 pregnant ewes to Elsley Farm. There are three different types of breeds: the Border Leicester's which have distinctively large upright ears, the Southdown's which have woolly faces, and the Derbyshire gritstone known for their black and white features. Some of the ewe residents are due to have twins which have been marked with a 'T' on their backs. We look forward to welcoming some lambs in spring 2.



PYJAMA DAY

Children in Reception enjoyed staying late at school this term for an exciting extended day. They wore pyjamas all day to celebrate their theme of Bedtime Stories.



As part of the activities, the children sang rhymes, drank hot chocolate and listened to a range of soothing bedtime stories.

CHILDREN'S MENTAL HEALTH WEEK

We are taking part in Children's Mental Health Week which runs from 5th -11th February.

Throughout the week, pupils will take part in class-based activities linked to this year's theme, **My Voice Matters**. The aim of the week is to raise awareness of children's mental health and to ensure children have the confidence to speak up and feel listened to.

On Friday 9th February, pupils and staff are invited to wear non-uniform with the theme of **Express Yourself**. This theme will allow us to celebrate what makes us unique. Although we want pupils to express themselves, please ensure the clothing worn does not cause offense to others.

The purpose of this day is to show support for children's mental health and to give Elsley pupils and staff an opportunity to express themselves. Please see the letter we sent out for more details.

YEAR 6 THEATRE VISIT

Year 6 had a wonderful trip to the theatre in January to see a stunning production of **Beauty and the Beast** at the Peacock Theatre. The production is organised by PWC who invite schools to watch their musicals every year and cover the cost of travel, refreshments and the tickets. Their mission is to give children the opportunity to watch a show in a West End theatre. The children were thoroughly impressed by the show and loved the inclusion of lots of their favourite songs.



SAVE the DATE

Safer Internet Day

2024 | Tuesday
6 February

www.saferinternetday.org



Tuesday 6th February is Safer Internet Day. Our Digital Leaders will be hosting assemblies on Monday 5th for the whole school and children will be taking part in Online Safety activities in their Computing lessons.

For parents and carers we are hosting 2 virtual workshops on Wednesday evening and Friday morning. Please sign up if you haven't done already by clicking the link: <http://tinyurl.com/ElsleyOS24form> More details on the next page.

Useful links for parents:

<https://saferinternet.org.uk/guide-and-resource/parents-and-carers>

<https://www.common sense media.org/articles/whats-the-impact-of-media-and-screen-violence-on-children>

<https://www.internetmatters.org/parental-controls/>

<https://parentsafe.lgfl.net/>

ONLINE SAFETY

VIRTUAL PARENT WORKSHOP

It is essential that parents know the latest information on how to keep their children safe when they are online.

We are running a morning and evening virtual workshop that will highlight key online safety issues and offer advice on how best to protect your children when they are using the internet, social communication apps and gaming.



Wednesday 7th February
Friday 10th February



6:30pm – 8:00pm
9:30am – 11:00am



Zoom (Online)
with Mr Fraser

To register for the workshop, please complete the form that has been sent to parents or scan the QR code. **Deadline: Monday 5th February.**
Zoom link will be sent out nearer the time.

Please note that this workshop is strictly for adults!

For more information visit: www.elsley.brent.sch.uk/curriculum/online-safety

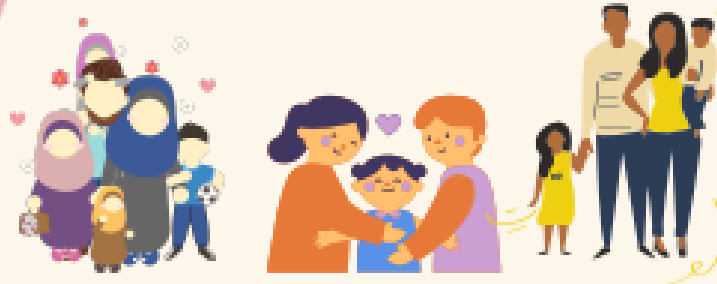


COFFEE MORNING

with

Brent Council

**Children and Families
Information Service**



Date: Friday 9th of February

Time: 9:00 - 10:00 am

Location: Elsley Primary School

***Come along to our coffee morning!
All families are welcome.***

- **Meet other families**
- **Find out about the support available
for children and families in Brent**

For more information contact the team:

02089373010



MEASLES

Don't let your child catch it

– get them vaccinated with the MMR vaccine

- measles outbreaks happen when not enough children have been vaccinated
- measles can be a very serious disease, leading to ear and chest infections, fits, diarrhoea, and damage to the brain. Measles can kill
- your child is at risk of measles if he or she hasn't had the MMR vaccination
- 2 doses of MMR vaccine are needed to get the best protection
- if your child is due to have had 2 doses of MMR but has not yet received them, no matter what age they are, you should contact your GP to get them vaccinated as soon as possible*
- if you can't remember if your child has had any, 1 or 2 doses of MMR vaccine, check his or her personal child health record (the Red Book). If this doesn't help, speak to your GP
- if you don't know how many doses your child has had, it's better to have 2 doses of MMR vaccine now rather than risk leaving them unprotected

*In response to a local outbreak then the 2 doses can be given one month apart from the age of 18 months.

i mmunisation

the safest way to protect your child

Some common questions about measles and the MMR vaccine are listed on the back of this leaflet





Answers to some common questions about measles and the MMR vaccine

Why are we seeing these outbreaks of measles?

Measles is a highly infectious disease, spreading quickly from person to person, especially in schools. A child with measles will infect almost all unprotected children they have contact with. Since the end of 2017 there has been an increase in measles globally which has affected the UK. This has resulted in some spread into wider communities, in particular in undervaccinated groups.

When are the MMR vaccinations usually given?

The best times are between 12 and 13 months of age and again at 3 years and 4 months, with one dose on each occasion. But, if your child wasn't vaccinated then, they can be vaccinated at any age with 2 doses one month apart.

Will there be any side effects to the vaccination?

Your child may get the symptoms of measles, mumps and rubella for up to 6 weeks after the vaccination but in a very much milder form. This proves that the vaccine is working and your child is building up resistance to future contact with the viruses that cause the 3 diseases. Not all children show these symptoms but that doesn't mean the vaccine isn't working.

Should parents in outbreak areas get vaccinated against measles?

As with many diseases, once you have had measles, you don't catch it again because you have built up a natural resistance to it. So, if you've had measles or 2 doses of MMR vaccine you do not need to get vaccinated now.

For more information about measles and MMR go to
www.nhs.uk/conditions/measles/