



# Comparing Wembley Past and Present

'How has Wembley changed as an area to live in over the years?'

## Wembley High Road



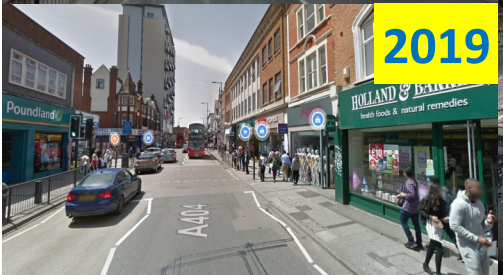
**1923**



**1960**



**2008**



**2019**

## Wembley Stadium



**1923**



**1960**



**1966**



**2003**

## Historical facts about Wembley

'Wemba lea' is first mentioned in a charter of 825. The Anglo-Saxon name means 'Wemba's clearing'. Wembley village grew up on the hill on the future Harrow Rd.

In 1547, there were 6 houses, by 1661, it had 9 large houses, 23 smaller ones and a population of 160 people.

In 1842, Sudbury Station opened (now Wembley Central Station) and by 1871, the population of Wembley had risen to 444.

The British Empire Exhibition (Wembley Stadium) opened in 1924.

In 1948, Wembley Stadium hosted the 14th Olympic Games, in 1966, England hosted the World Cup and won the tournament and in 1985, the benefit concert Live Aid was held at stadium.

In 1965, Wembley joined to become the new London Borough of Brent.

In 1971, Wembley High Road was voted the 11th best place to shop in London.

In 2019, a brand new theatre, The Troubadour Theatre, opened in Wembley Park.

The current population of Wembley is 102,856.

## Key Vocabulary

architecture	The art and design of constructing a building
borough	A large area of London made up of smaller towns.
community	A group of people living in the same place.
development	When an area is being re-built or modernized.
high street	Main shopping street in a local area.
modern	Relating to the present or recent times.
past	Relating to a time from history.
population	The number of people living in a place.
urban	Relating to a town or city.

## Coat of Arms



## Recommended websites

<https://www.brent.gov.uk/services-for-residents/culture-leisure-and-parks/brent-museum-and-archives/find-out-about-your-local-area/history-of-wembley-and-tokyngton/>

<https://en.wikipedia.org/wiki/Wembley>